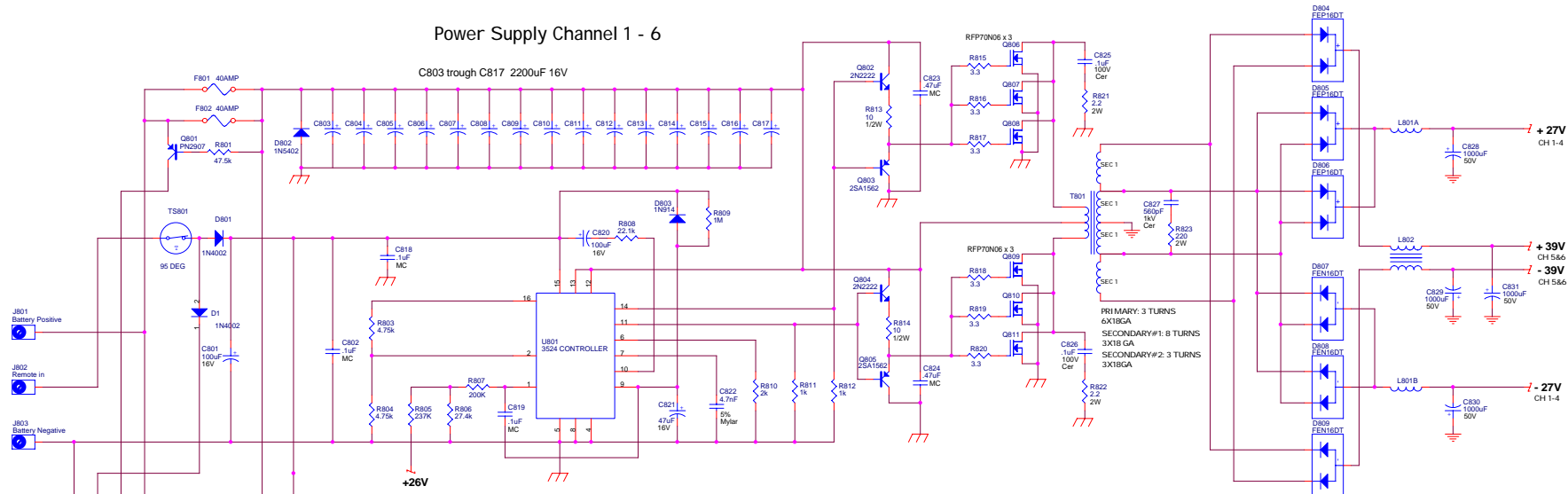
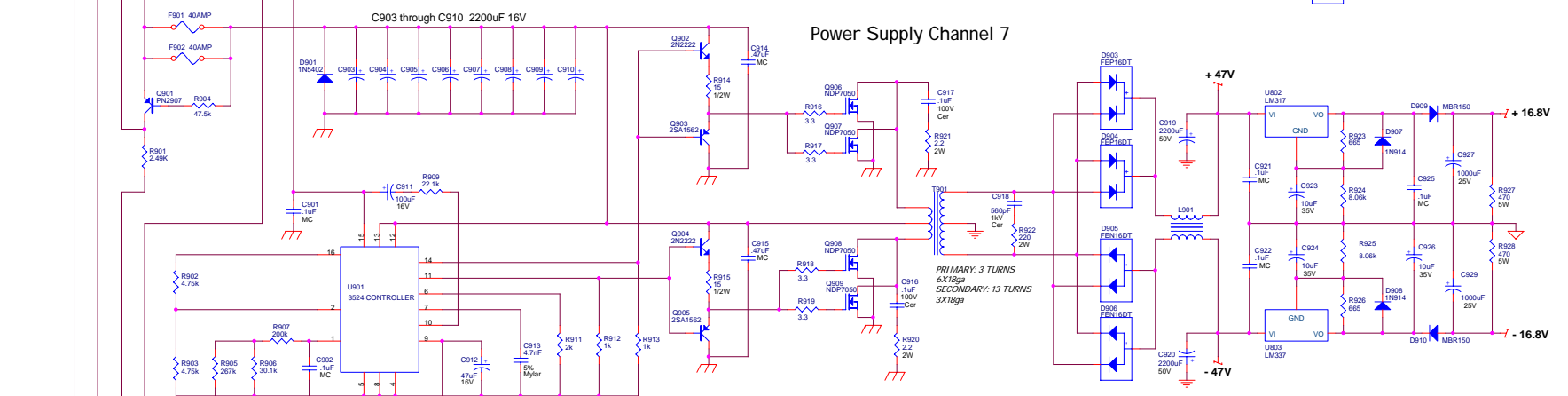


Power Supply Channel 1 - 6



Power Supply Channel 7

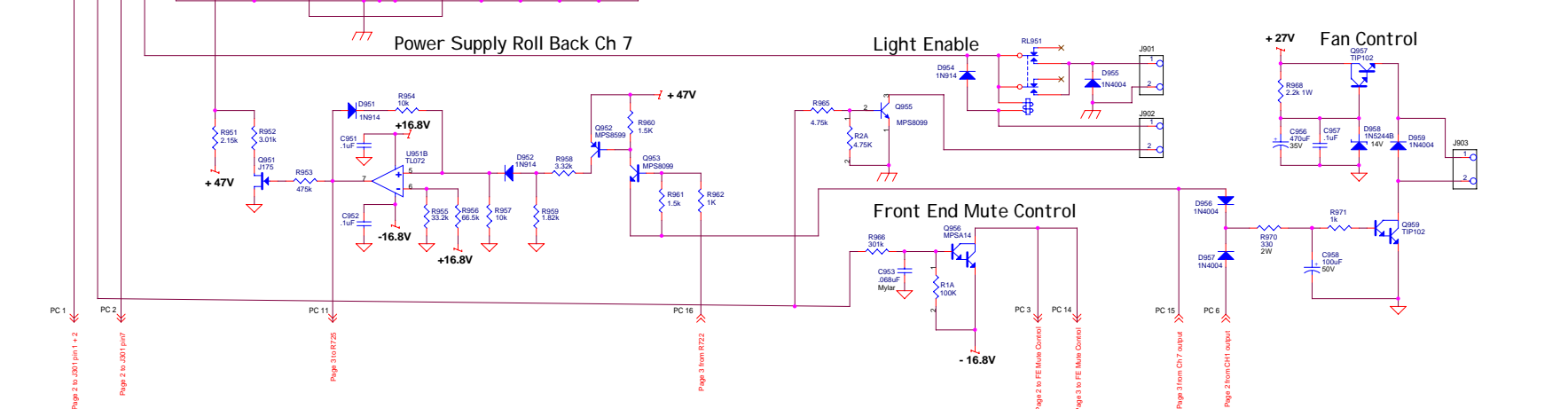


Power Supply Roll Back Ch 7

Light Enable

Fan Control

Front End Mute Control



- + 27V PC 4 Page 2 +27V
 - 27V PC 5 Page 2 -27V
 - + 39V PC 17 Page 3 +39V
 - 39V PC 18 Page 3 -39V
 - + 47V PC 19 Page 3 +47V
 - 47V PC 20 Page 3 -47V
 - + 16.8V PC 12 Page 3 to J701 pin 6
 - 16.8V PC 13 Page 3 to J701 pin 5
- = Signal Ground
 = Power Ground
 = Battery Negative
 = Amplifier Chassis Ground

